

## How to Inflate a tire

- Loosen the bead retainer screws. (photo 1)
- Remove the valve core for added air flow. (photo 2)
- Use soap and water to help the tire bead seat.



photo 1

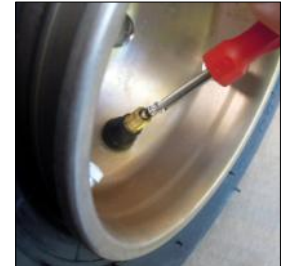


photo 2

### **WARNING**

- Never hold the air hose head in hand, when inflating a tire. (photo 3, 4)
- Avoid staying at both sides of the rim, when inflating a tire.
- Do not exceed 4 bar when seating a tire on the rim.



photo 3



photo 4